



Ciss

**Commodities
International
Survey Services**



**Company CISS
(Commodities International
Survey Services) -
This is a team of professionals
with experience of doing
business in major international
survey companies more than 10
years.**

ABOUT COMPANY

We have teamed up our forces, experience and knowledge in order to offer only the best practice and business solutions in the field of independent inspections for active commodities traders and others players all over the world.

Operational excellence and high standards of CISS GROUP allow our partners feel protected twenty-four-hour a day.



It's Shipping & Survey

OFFICES AND REPRESENTATIONS

The Head office of management company CISS Group Pte.Ltd. is located in Singapore.

The Group consists of several different companies, all of which are involved and linked with maritime business.

There are three main business directions of the companies:

- Survey (testing, inspection and certification) of different cargoes and commodities.
- Ship brokerage and vessel chartering, ship operation and management.
- Marine power plants maintenance, overhauling and repair by mobile technical team.

We provide service globally - all around the world by own or subcontracted inspectors in more than 60 countries and more than 150 ports.

At the end of 2016 CISS Group Ukraine Llc. was established in Ukraine as a branch with the head office in Odessa. Here the execution and operational departments are located.

Company staff - more than 60 specialists, each of them has a good reputation and solid experience in the specified field of business.

Company offices in Ukraine are located in all sea and river ports. Representative offices are also existed in Dnipro, Vinnytsia, and Kyiv cities. Their presence allows us to answer quickly on all of our partners` requests.



CISS
Commodities
International
Survey Services



BASIC SERVICES



- incoming / outcoming cargo control
- inspection of holds cleanliness / containers / vehicle / wagons
- inspection of vehicle suitability for specified cargo carriage
- loading supervision twenty-four-hour a day



- visual inspection of cargo quality during loading/discharging operations
- cargo sampling during loading/unloading and a composite sample preparation as representative for whole cargo amount
- laboratory testing and analyses for all types of cargo



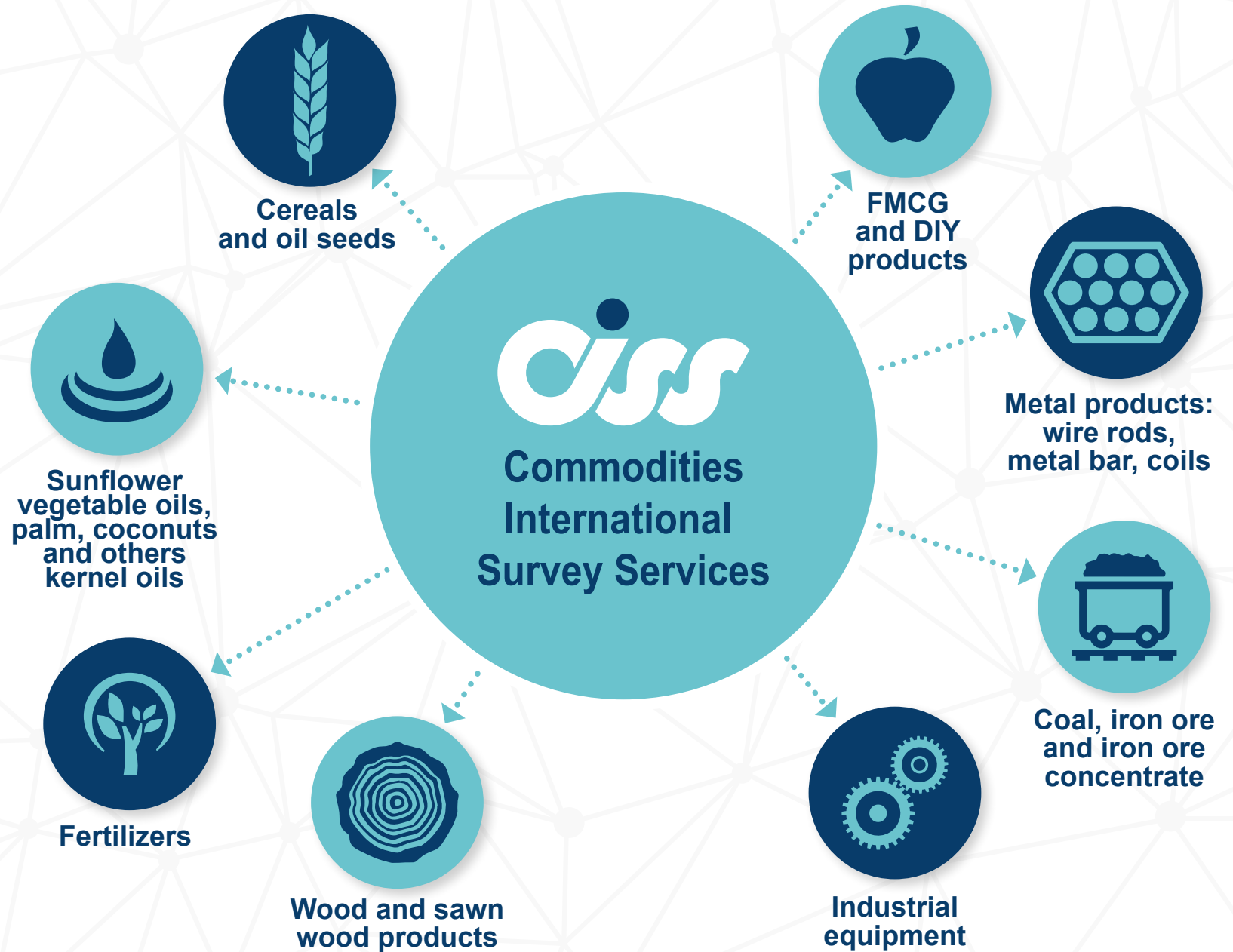
- draught survey (cargo volume determination on the vessel)
- loading supervision of containers including of liquid cargoes in flexi tanks
- sealing of vessel's holds /container's doors
- photo report of all inspection stages

ADDITIONAL SERVICES



- **Cereals cargo fumigation.**
- **SMA** (stock monitoring agreement) - confirmation of cargo availability and quantity / quality stored.
- **Crop monitoring** - forecasting of the future harvest.
- **Checking out of the technical condition** of warehouses, silo bins, terminals.
- **Vendor verification** – checking out of exporter physical existence, their factory accreditations and labor forces, technical capacities.
- **FOG** (Full Outturn Guarantee) – control of quantity of cargo during loading and the guarantee that it will be discharged in the same quantity. In case of shortage during discharge occur, insurance coverage will be applied, which provided by first-class international underwriters and reinsurance companies such as: Allianz, Havrico, AON, Munich Re, Lloyd's and others.
- **FCR** (forwarder certificate of receipt) confirmation for cargo availability and amount accumulated in warehouses.
- **Escorting of the cargo** by the inspector from the place of origin (factory, plant, warehouse) to destination or shipment place (warehouse, port).
- **Temperature and moisture control** of refrigerated cargo (meat, fish, fruits) during whole COLD supply chain delivery by using temperature sensors.
- **Vehicle location and movement inspection** by GPS sensors for transport facilities.
- **Checking out of cargo securing** on the vessel or into container.
- **Consulting assistance not in cargo survey only.** We provide advising for appropriate place of storage, transshipment or terminal facility and cranes capacity. We will help you in forwarding and ocean freight.

TYPES OF CARGOES FOR INSPECTIONS



ADVANTAGES



Respectability towards the client. Deep understanding and perception of customers business



Quick decision making and prompt quotations



Integration with high-tech IT solutions



First-class international accreditations

CISS
Commodities
International
Survey Services



Special discount program for complex of services (incoming control, vessel inspection, fumigation)
Flexibility in rates formations



World-wide partners presents



Absence of corruption



Accuracy, responsibility, reliability

ACCREDITATIONS



CISS
Commodities
International
Survey Services



CONTACTS



**Commodities
International
Survey Services**



**10 Anson Road #29-05a
International Plaza
Singapore (079903)
Reg.No 201618838r**



Department
of contracts execution:
inspection@ciss-group.com

General questions:
office@ciss-group.com



+(65) 315 916 08

www.ciss-group.com

It's Shipping & Survey